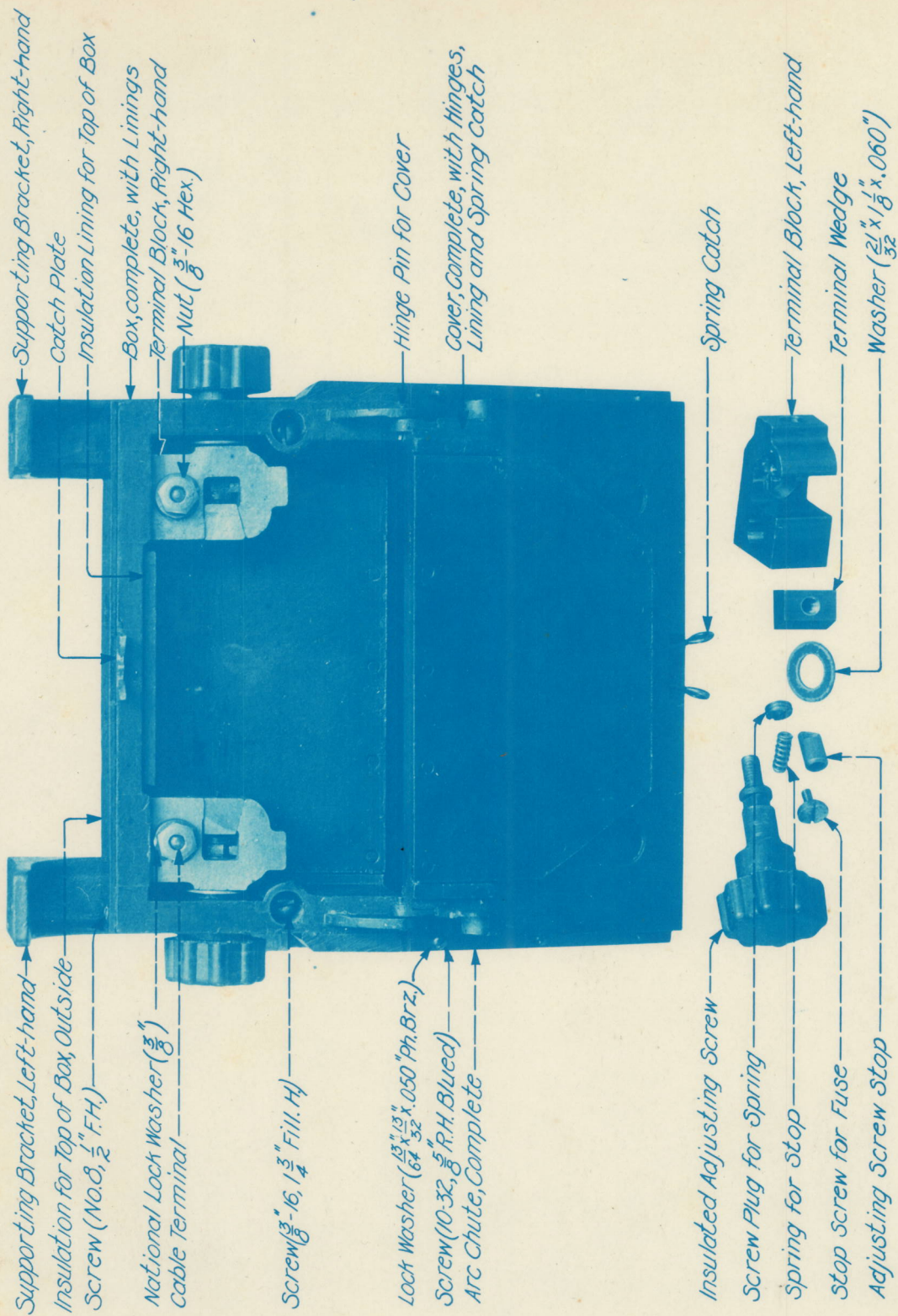


Informal Catalogue.



Type MA 13, Form A Fuse Box

302954

# Dimensions and Method of Supporting MA-13-B Fuse Box

Fuse box supports should be insulated from any grounded metal work on car.

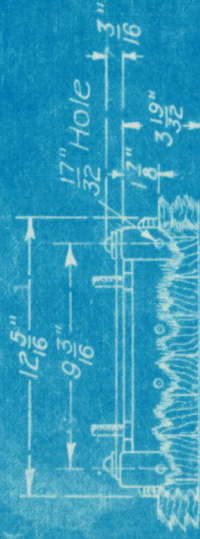
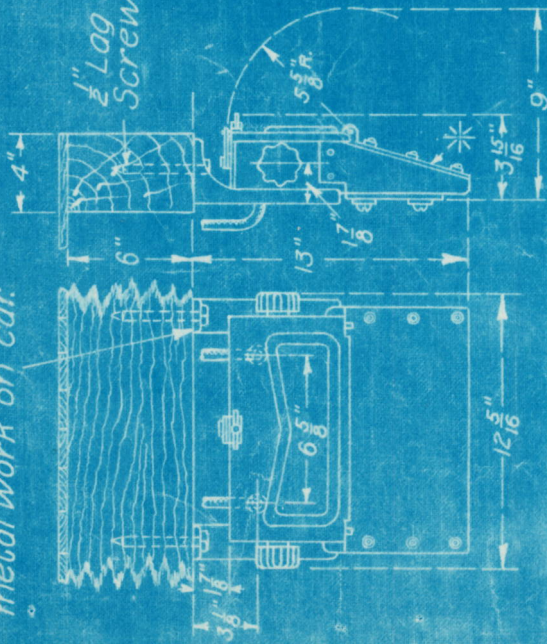


Fig. 1  
Method of support with hangers

\* Chute may be left off if desired, but arc will be more noticeable

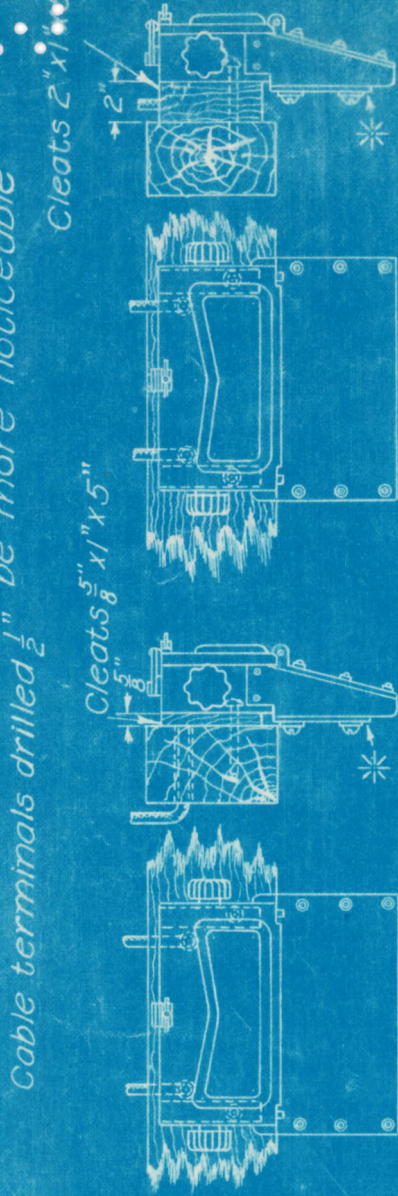


Fig. 2

Method of support with-out hangers, cable leads carried through car sills.

Fig. 3

Method of support with-out hangers; cable leads carried between fuse box and car sill

Checked . . . . .

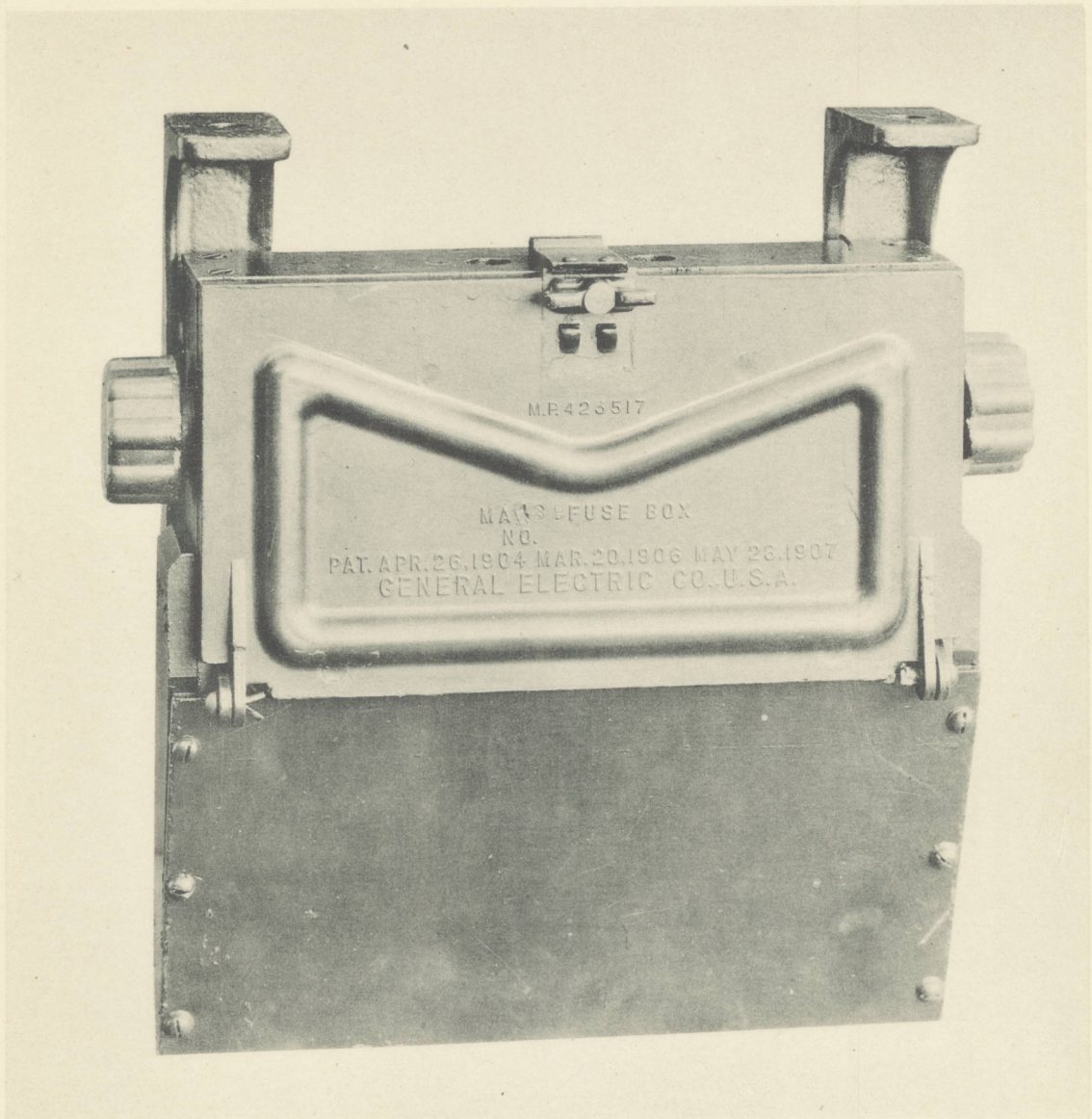
Approved *[Signature]*

21 Apr 1911

Engineering Dept.  
General Electric Company

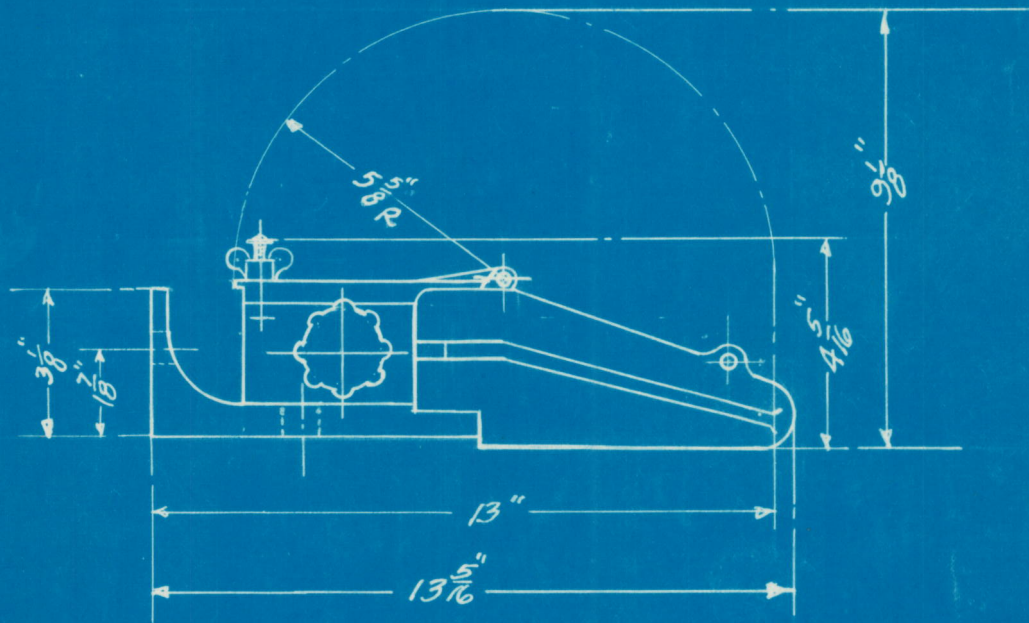
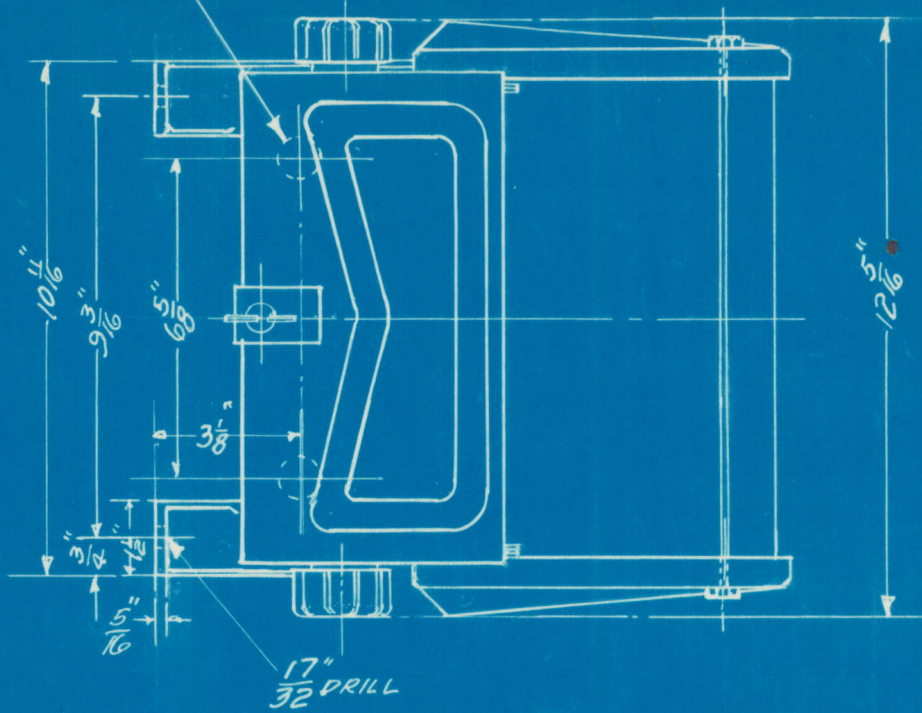
D.S. 22209

XV



215830 MA 13 B FUSE BOX.

$\frac{3}{8}$ " DRILL IN TERMINAL  
FOR CABLE



# OUTLINE

MA-13-F FUSE BOX

R.C.

DRAWN BY J. PETRIE JUNE 13 '22 INSPECTED BY JUN 26 '22

K2182727

GENERAL ELECTRIC COMPANY

FF-446 ZM 12-8-21